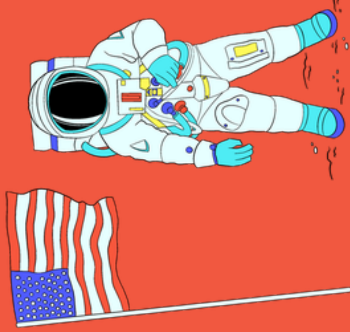


FROST
SCIENCE



Celebrating
American
Innovation



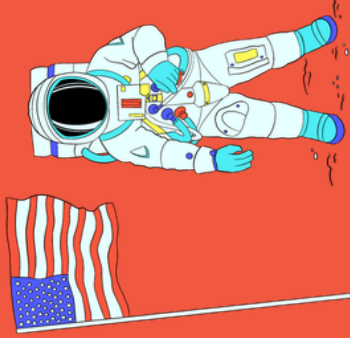
Stars of
Science

INNOVATOR CARD

FROST
SCIENCE



Celebrating
American
Innovation



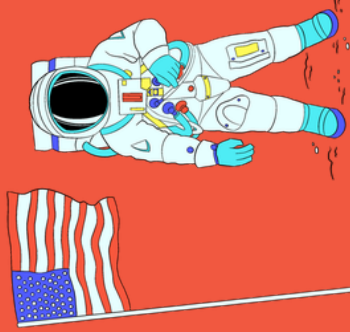
Stars of
Science

INNOVATOR CARD

FROST
SCIENCE



Celebrating
American
Innovation



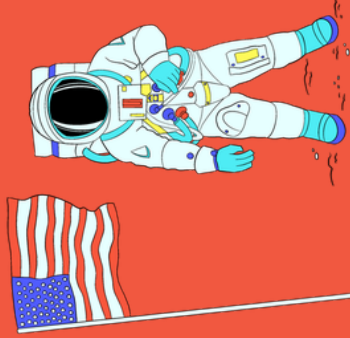
Stars of
Science

INNOVATOR CARD

FROST
SCIENCE



Celebrating
American
Innovation



Stars of
Science

INNOVATOR CARD

MARINE SCIENCE



Marie Tharp

1952

Produced the first scientific map of the Atlantic Ocean.

Mapped the Mid-Atlantic Ridge.

MARINE SCIENCE



Robert Fulton

1807

Developed the first successful commercial steamboat service.

Helped launch the era of powered watercraft.

MARINE SCIENCE



Sylvia Earle, Ph.D.

1979

Used the JIM suit to descend 1,250 feet and holds the record for deepest untethered dive.

First woman to serve as chief scientist at NOAA.

MARINE SCIENCE



Frederick Otis Barton Jr.

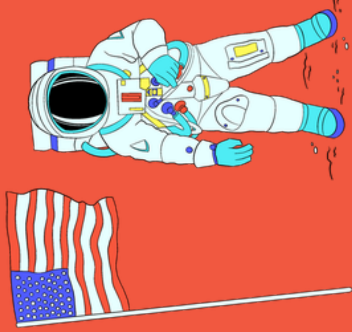
1930

Invented two deep-sea submersibles, the Bathysphere and Benthoscope.

FROST
SCIENCE



Celebrating
American
Innovation



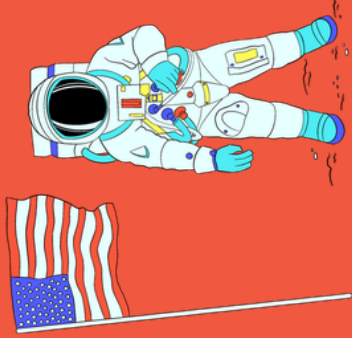
Stars of
Science

INNOVATOR CARD

FROST
SCIENCE



Celebrating
American
Innovation



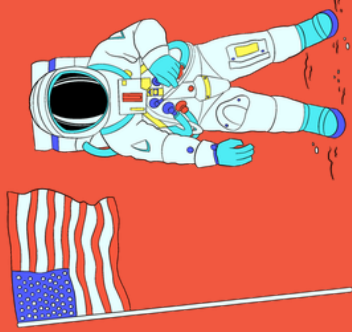
Stars of
Science

INNOVATOR CARD

FROST
SCIENCE



Celebrating
American
Innovation



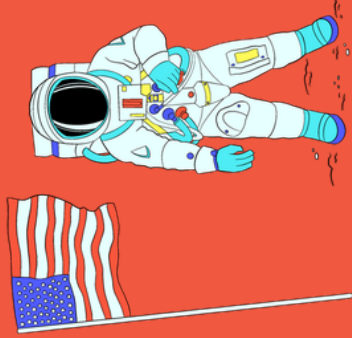
Stars of
Science

INNOVATOR CARD

FROST
SCIENCE



Celebrating
American
Innovation



Stars of
Science

INNOVATOR CARD

MARINE SCIENCE



Dean Grubbs, Ph.D.
2007

Studies the smalltooth sawfish, an endangered species in Florida.
Works to protect smalltooth sawfish by designating critical habitat in the U.S. & Bahamas.

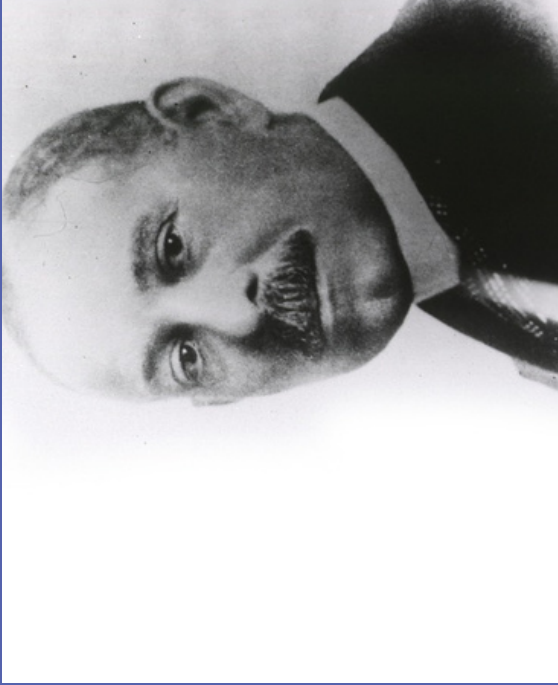
HEALTH



William Bradley Coley, M.D.
1891

Extracted toxins from bacteria and injected them into cancer patients to produce an immune response, shrinking their tumors.
"Father of Immunotherapy"

HEALTH



Daniel Hale Williams, M.D.
1893

Completed the first open heart surgery.
Patient survived the surgery and left the hospital less than two months later.

HEALTH



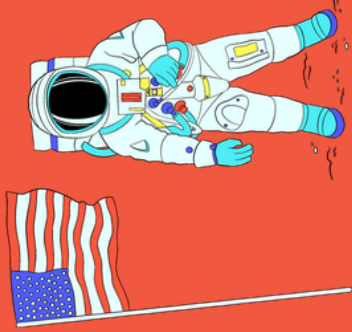
Patricia Era Bath, M.D.
1986

Co-founded the American Institute for the Prevention of Blindness.
Invented the phacoprobe which made cataract surgeries safer.

FROST
SCIENCE



Celebrating
American
Innovation



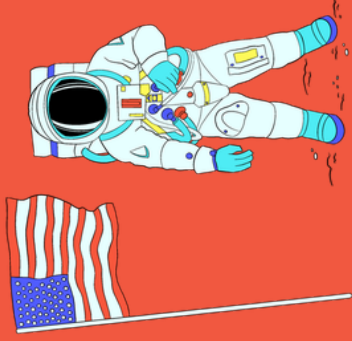
Stars of
Science

INNOVATOR CARD

FROST
SCIENCE



Celebrating
American
Innovation



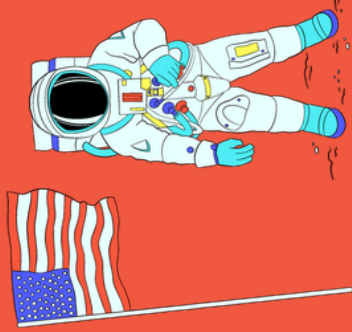
Stars of
Science

INNOVATOR CARD

FROST
SCIENCE



Celebrating
American
Innovation



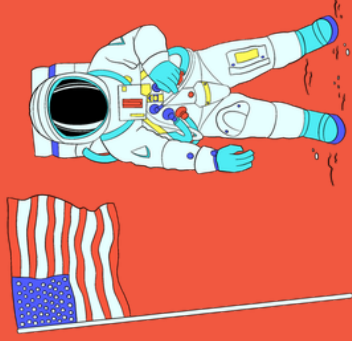
Stars of
Science

INNOVATOR CARD

FROST
SCIENCE



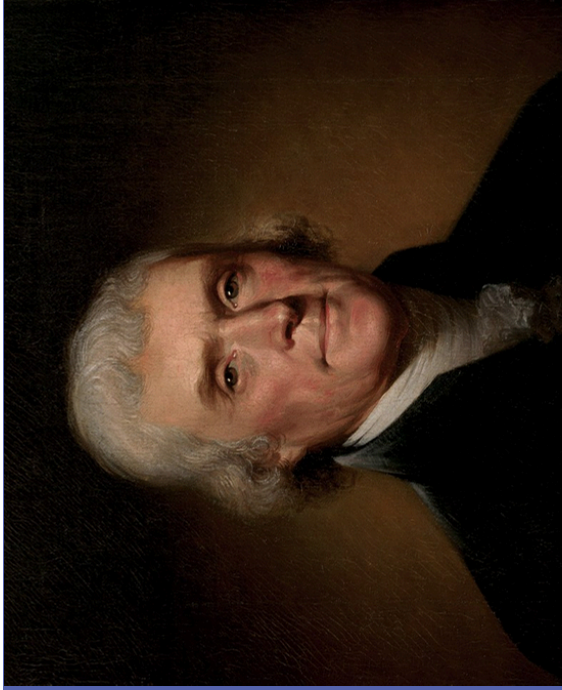
Celebrating
American
Innovation



Stars of
Science

INNOVATOR CARD

PALEONTOLOGY



**Thomas Jefferson
1804**

Discovered the *Megalonyx jeffersonii*, a member of the sloth family.
Known as the "Father of American Paleontology" for establishing the scientific field in the United States.

HEALTH



**Katalin "Kati" Karikó, Ph.D.
2005**

Discovered that mRNA can trigger an immune response, highlighting mRNA as a potential tool for vaccine development.
mRNA was used to develop the Covid-19 vaccine.

PALEONTOLOGY



**Joseph Leidy, M.D.
1869**

Proved prehistoric presence of horses, lions, tigers, camels, and rhinoceros in the Western United States.
Founder of American vertebrate paleontology.

HEALTH



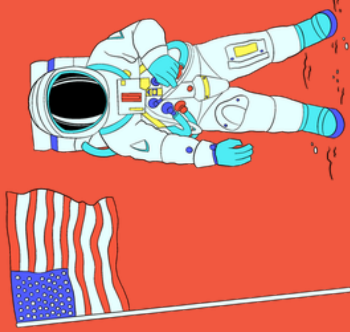
**Ivan Owen
2013**

Created an affordable prosthetic hand.
Posted the 3D-printable files for the design online for anyone to use for free.

FROST
SCIENCE



Celebrating
American
Innovation



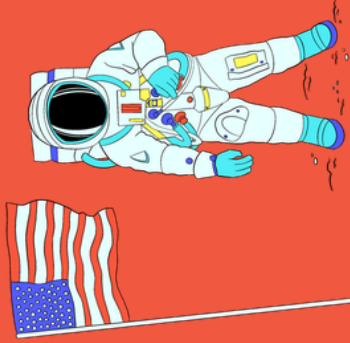
Stars of
Science

INNOVATOR CARD

FROST
SCIENCE



Celebrating
American
Innovation



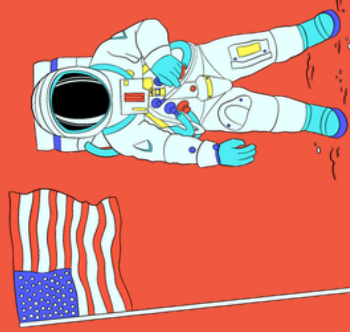
Stars of
Science

INNOVATOR CARD

FROST
SCIENCE



Celebrating
American
Innovation



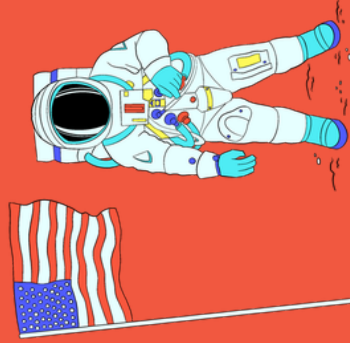
Stars of
Science

INNOVATOR CARD

FROST
SCIENCE

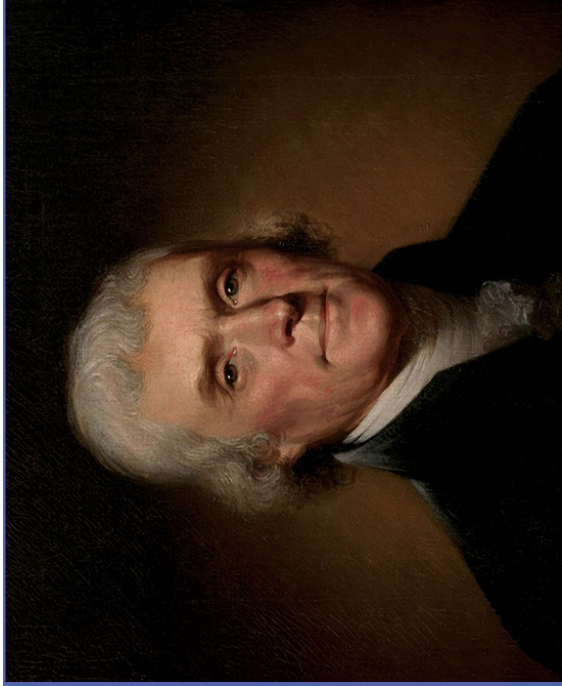


Celebrating
American
Innovation



Stars of
Science

INNOVATOR CARD



PALEONTOLOGY

Thomas Jefferson
1804

Discovered the *Megalonyx jeffersonii*, a member of the sloth family.
Known as the "Father of American Paleontology" for establishing the scientific field in the United States.



PALEONTOLOGY

Mary Dawson, Ph.D.
1975

Discovered prehistoric mammals during a trip to the Arctic which supported the hypothesis that a land bridge used to connect North America and Europe.



PALEONTOLOGY

Robert Thomas Bakker, Ph.D.
1975

After studying the anatomy of different reptiles, amphibians, and birds, he concluded that dinosaurs were evolutionarily closer to birds than reptiles.



PALEONTOLOGY

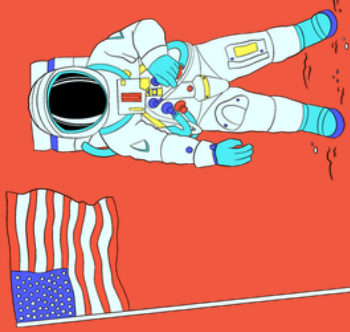
Willard Libby, Ph.D.
1949

Developed radiocarbon dating which is used to determine the age of organic materials.

FROST
SCIENCE



Celebrating
American
Innovation



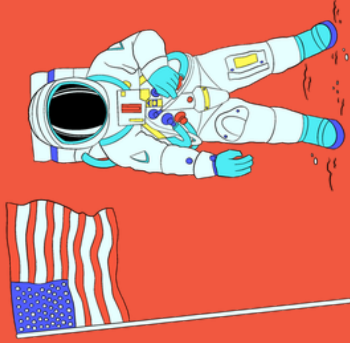
Stars of
Science

INNOVATOR CARD

FROST
SCIENCE



Celebrating
American
Innovation



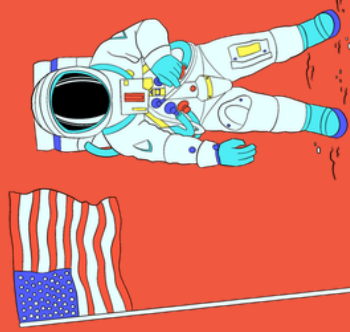
Stars of
Science

INNOVATOR CARD

FROST
SCIENCE



Celebrating
American
Innovation



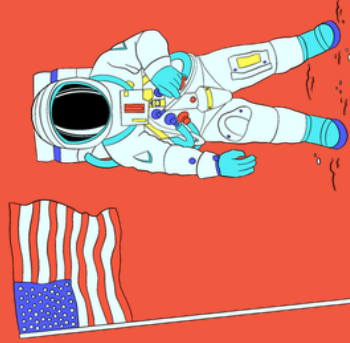
Stars of
Science

INNOVATOR CARD

FROST
SCIENCE



Celebrating
American
Innovation



Stars of
Science

INNOVATOR CARD

ASTRONOMY



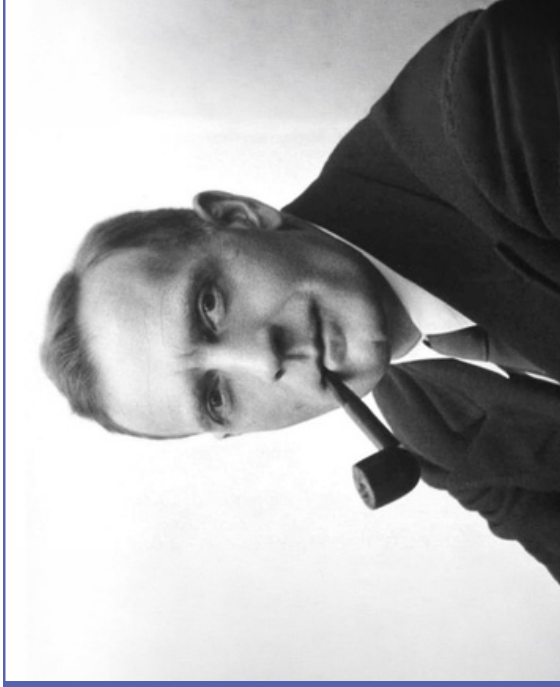
Annie Jump Cannon, Ph.D.

1922

Developed the Harvard spectral system of classifying stars by their spectra.

Classified 350,000 stars over the course of her career.

ASTRONOMY



Edwin Hubble, Ph.D.

1929

Discovered that galaxies exist beyond the Milky Way and that the universe is constantly expanding.

Coined Hubble's Law which states a further a galaxy is from Earth, the redder it appears.

ASTRONOMY



Neil A. Armstrong

1969

Commanded the Apollo 11 lunar landing mission and was the first man on the Moon.

ASTRONOMY



Carl Sagan, Ph.D.

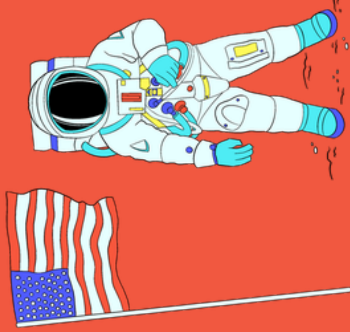
1980

Produced the television series Cosmos which translated complex space science into compelling stories for viewers.

FROST
SCIENCE



Celebrating
American
Innovation



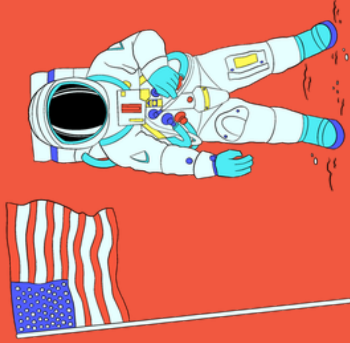
Stars of
Science

INNOVATOR CARD

FROST
SCIENCE



Celebrating
American
Innovation



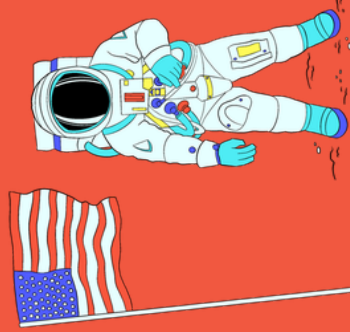
Stars of
Science

INNOVATOR CARD

FROST
SCIENCE



Celebrating
American
Innovation



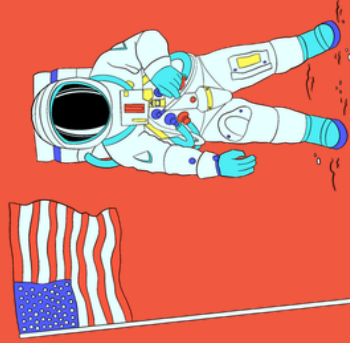
Stars of
Science

INNOVATOR CARD

FROST
SCIENCE



Celebrating
American
Innovation



Stars of
Science

INNOVATOR CARD

AERONAUTICS



Wilbur & Orville Wright

1903

Invented, built, and flew the world's first successful airplane.

ASTRONOMY



Kip Stephen Thorne, Ph.D.

1984

Co-founded the Laser Interferometer Gravitational-Wave Observatory (LIGO) project meant to detect cosmic gravitational waves.

AERONAUTICS



Glenn Hammond Curtiss

1911

Invented the first ever four-cylinder engine for airships.

Became one of the top aircraft manufacturers in the United States and ran five flight schools across North America.

AERONAUTICS



Amelia Earhart

1932

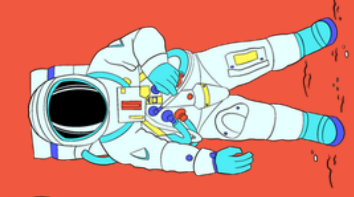
First woman and second person to complete a solo transatlantic flight.

Set a world record for the highest altitude for a rotary-wing aircraft, flying over 18,000 feet.

FROST
SCIENCE



Celebrating
American
Innovation



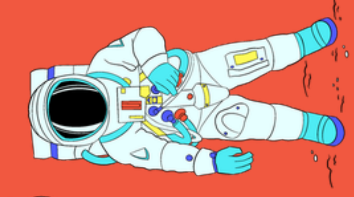
Stars of Science

INNOVATOR CARD

FROST
SCIENCE



Celebrating
American
Innovation



Stars of Science

INNOVATOR CARD

AERONAUTICS



Alan Bartlett Shepard Jr.

1961

The first American to travel to space aboard the Freedom 7 Mercury capsule.

Commander for the Apollo 14 mission.

AERONAUTICS



Mary Golda Ross

1942

Created the flight paths to Venus and Mars and contributed heavily to the NASA Planetary Flight Handbook Vol. 3.

First Native American aerospace engineer.