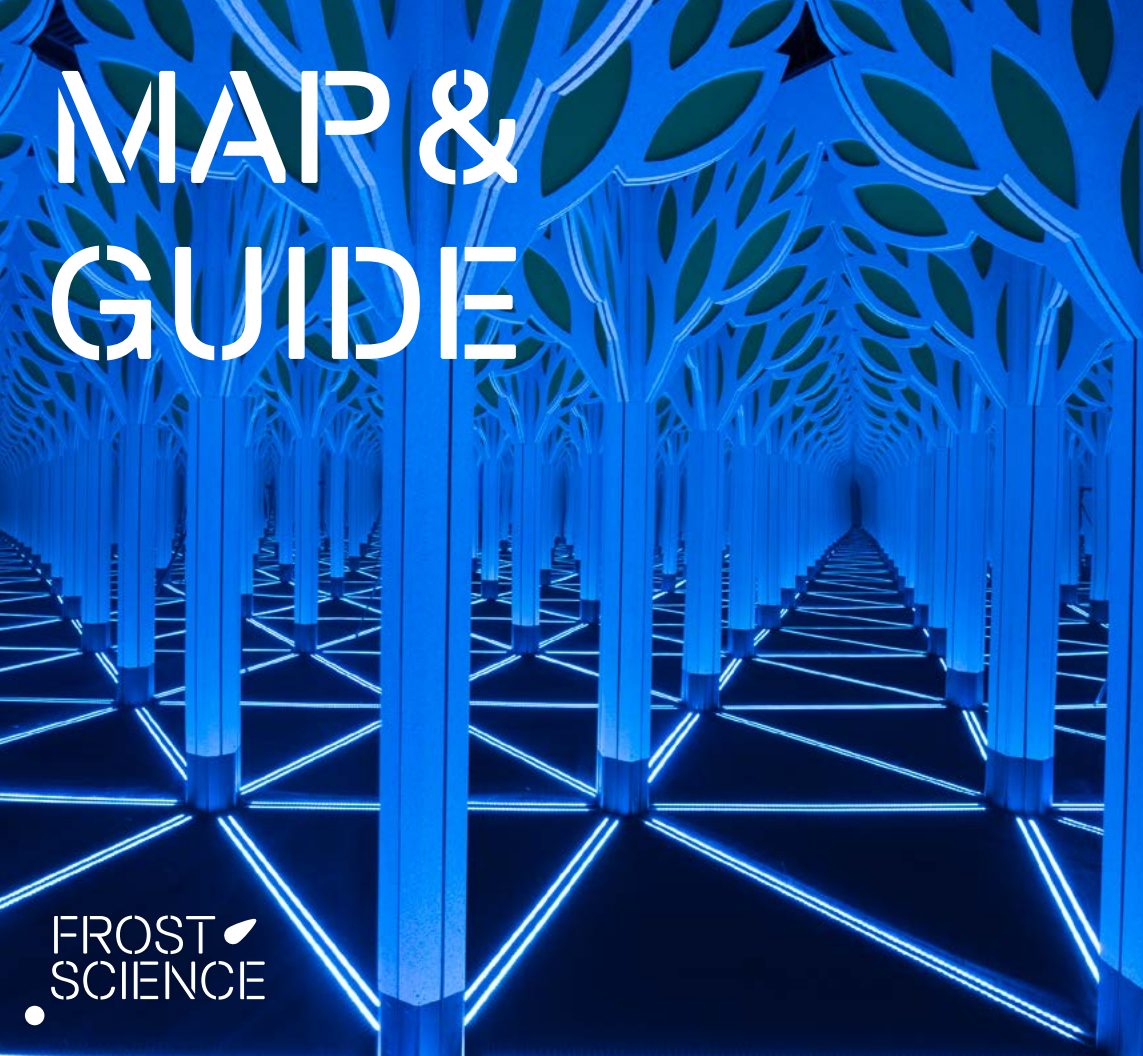


MAP & GUIDE



FROST SCIENCE



FOOD@SCIENCE

Fuel up with a variety of salads, burgers and pizzas in a casual indoor and outdoor setting overlooking the park.



COFFEE@SCIENCE

Stop by for Starbucks beverages, pastries and empanadas.



SCIENCE STORE

Discover a wide range of science tools and toys, t-shirts, books and unique exhibition-related gifts.

Located on Level 1

Max Planck Images of Science

Don't miss this special photo exhibit featuring a collection of 30 striking images captured during the course of scientific research from some of the Max Planck Society's work around the world, presented by the Max Planck Florida Institute for Neuroscience. On view in the museum's Feathers to the Stars exhibition.

Located on Level 3

Behind the Build

SELF-GUIDED TOUR

The Frost Science campus is an exhibition in and of itself! Look for this green icon around the museum to learn more about our design concept and architecture, environmentally friendly best practices and behind-the-scenes information on our technology infrastructure.



A printed accessibility guide to the museum is available upon request.

BECOME A MEMBER TODAY!

Membership pays for itself in just two visits! Apply your same-day admission ticket(s) to the cost of an annual membership. Visit the Member/Guest Relations Desk before you leave the museum today.* Explore more at frostsscience.org/membership.

*Terms and restrictions apply.

HOURS

Open daily, 365 days a year, 9:30 a.m. – 6:00 p.m.

Onsite admission sales at the Ticket Center end at 5:00 p.m. Visit frostsscience.org regarding any changes in schedule or closure information.

Please note: During holiday periods and summer months, the museum offers special extended hours on select days.

COFFEE@SCIENCE

Open 9:00 a.m. – 6:00 p.m.

FOOD@SCIENCE CAFÉ*

Open M–F 11:00 a.m. – 4:00 p.m.
Open Sat–Sun 11:00 a.m. – 5:00 p.m.

*Hours are subject to change

SCIENCE STORE

Open 9:30 a.m. – 6:00 p.m.

GET CONNECTED

Follow us @frostsscience and tag us at #FrostScience and #ItsScienceMiami.

For more information and to purchase tickets, please visit frostsscience.org/playourday.

PHILLIP & PATRICIA FROST MUSEUM OF SCIENCE

1101 Biscayne Blvd, Miami, FL 33132 | 305-434-9600

@FROSTSCIENCE

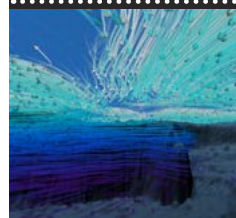


The Phillip and Patricia Frost Museum of Science is supported by the Miami-Dade County Department of Cultural Affairs and the Cultural Affairs Council, the Miami-Dade County Mayor and Board of County Commissioners of Miami-Dade County. This project is supported by the Building Better Communities Bond Program and the City of Miami. Sponsored in part by the State of Florida, Department of State, Division of Cultural Affairs, and the Florida Council on Arts and Culture. The museum is accredited by the American Alliance of Museums, is an affiliate of the Smithsonian Institution and a member of the Association of Science and Technology Centers. Frost Science is an accessible facility. All contents ©Phillip and Patricia Frost Museum of Science. All rights reserved.

Frost Planetarium

Show Descriptions

Showtimes



DYNAMIC EARTH

Narrated by Liam Neeson, you'll ride along on swirling ocean currents, fly into roiling volcanoes and dive into the heart of a hurricane as you explore the inner workings of the Earth's climate system.

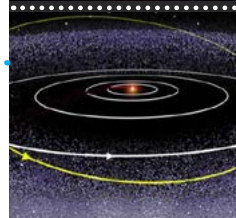
10:00 a.m.
11:20 a.m.
2:00 p.m.
4:40 p.m.



JOURNEY TO THE STARS

Journey through space and time to experience the life and death of the stars in our night sky, including our own nurturing Sun, in this dazzling space show narrated by Whoopi Goldberg.

10:40 a.m.
1:20 p.m.
3:20 p.m.



HIDDEN WONDERS OF OUR SOLAR SYSTEM

Take a guided journey with an astronomy educator in this new live show and discover the wonders of the planets, moons, asteroids, comets and other celestial objects that inhabit our little corner of the universe.

12:00 p.m.
4:00 p.m.



PHANTOM OF THE UNIVERSE: THE HUNT FOR DARK MATTER

From the Big Bang to the emergent cosmos, immerse yourself in the exciting exploration of dark matter in a journey across space and time narrated by Tilda Swinton.

12:40 p.m.
2:40 p.m.
5:20 p.m.

Daily Schedule

Watch science come to life through live demonstrations and presentations around the museum. Get hands-on with various science topics during these special guest experiences:



DIVE BAR Located in the Aquarium: The Dive - Level 3

Dive deeper into marine science with hands-on activities that investigate the animals, plants and environments which marine and coastal life call home.

11:00 a.m. / 1:00 p.m. / 3:00 p.m.



LET'S DANCE Located in the Ocean Gallery - Level 1

Rock your body during a friendly dance competition that explores how energy works within the human body.

11:15 a.m. / 12:45 p.m. / 1:45 p.m. / 2:45 p.m.



SPARK OF SCIENCE Located on the Level 3 Outdoor Terrace

Experience engaging presentations and hands-on demos that explore exciting science topics.

11:30 a.m. / 1:30 p.m. / 3:30 p.m.



SNACK-SIZE SCIENCE Located in the MeLaß - Level 2

Discover the amazing ways the human mind and body work together by taking a bite out of topics like neurobiology, chemistry and food science.

12:00 p.m. / 2:00 p.m. / 4:00 p.m.



ANIMAL ENCOUNTERS Located in the Aquarium, various locations

Come face-to-face with some of the animals that call Frost Science home, including some our rehabilitated reptiles and feathered friends.

Times Vary



INSIDER'S TOUR* Meet on Level 5 outside of the Elevator Vestibule

Enhance your visit with a guided Insider's Tour of Frost Science, including special access to an animal feeding and encounter. Must purchase tickets by 2:00 p.m. at the onsite Ticket Center.

2:15 p.m. (Saturdays and Sundays Only) *Separate ticket required.

Your Support Matters

The Phillip and Patricia Frost Museum of Science, a 501(c)(3) non-profit organization, inspires people to enjoy science and understand its power to positively impact our world. We are a champion for science education and research, environmental conservation, animal care and rehabilitation.

Consider a mission-fulfilling gift today at frostsscience.org/donate.



Experience more with the Frost Science Mobile App!

HOW TO DOWNLOAD:



- 1 Download the Frost Science mobile app for Apple and Android smartphones via the App Store or Google Play.
- 2 Turn on Bluetooth.
- 3 In your device settings, connect to the free "Frost Science Guest" WiFi network.
- 4 Accept the terms of service to connect.



ENHANCED EXPERIENCE

Make the most of your visit with specially curated content, including fascinating science stories, research, videos and photos.



AUDIO DESCRIPTION TOURS

Get audio descriptions of selected tactile exhibits in the Aquarium and museum exhibitions.



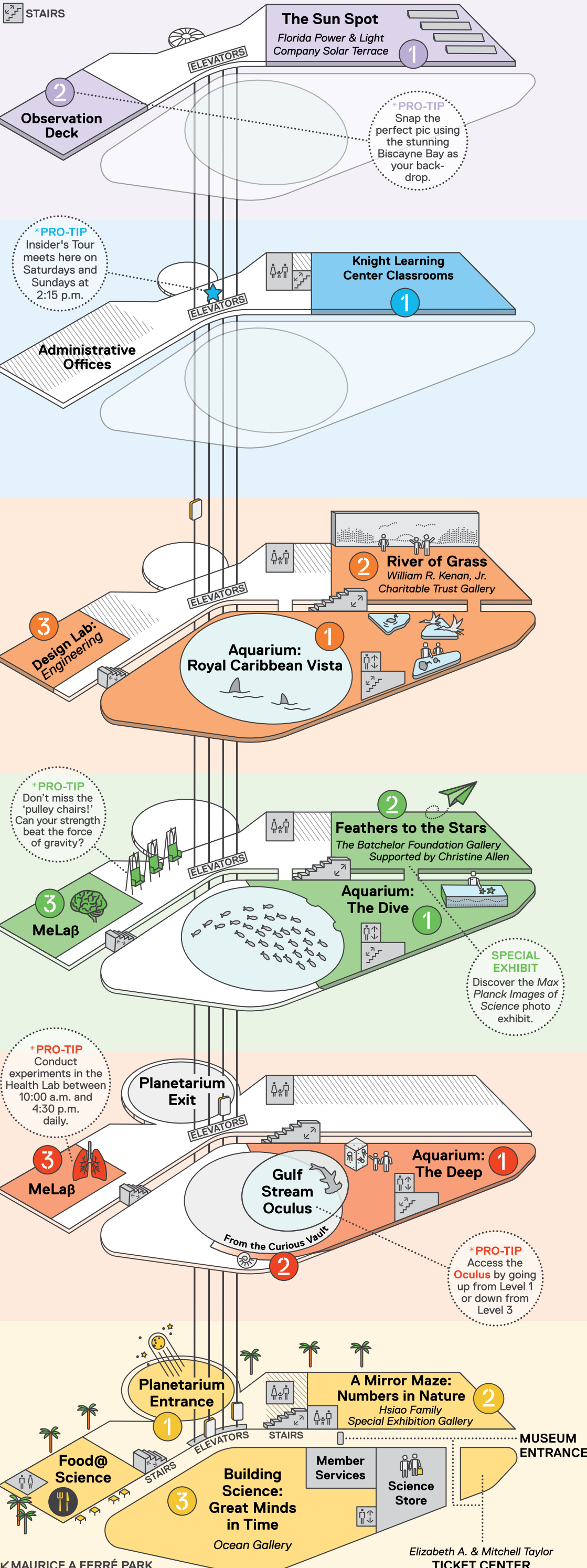
SCAVENGER HUNT!

Discover more by going on an interactive scavenger hunt around the museum! Follow the clues and earn multiple digital badges. Collect them all and visit the Science Store to claim a special prize.

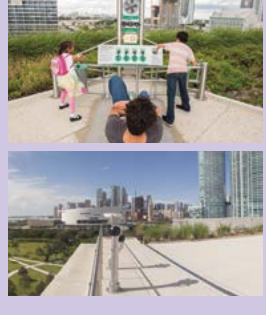
- RESTROOMS
- ELEVATORS
- STAIRS

Frost Science is a smoke-free facility. No smoking or vaping on property.

Please recycle me! At the end of your visit, please leave this map in the map recycling bins located in the Main Atrium near the exit.



LEVEL 6 (ROOF)



- 1 The Sun Spot**
Experience the power of the sun as a renewable source of energy through several interactive solar-powered activities.
- 2 Observation Deck**
Take in spectacular views of Downtown Miami and the sparkling waters of Biscayne Bay using our viewfinders before snapping the ultimate rooftop photo.

LEVEL 5



- 1 Knight Learning Center Classrooms**
The Knight Learning Center is comprised of three classrooms that host Frost Science camps, various learning opportunities, and can be utilized as an event space.
- PLEASE NOTE:**
There are currently no active exhibitions on this floor.

LEVEL 4



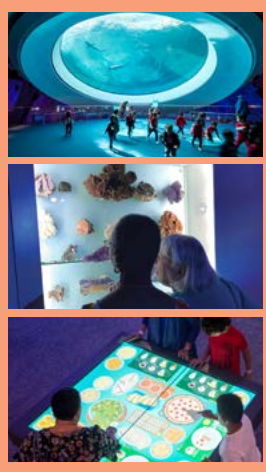
- 1 Aquarium: Royal Caribbean Vista**
The top deck of the Aquarium puts you at the surface of key South Florida ecosystems as you explore the mangrove forests and corals. Don't miss the free-flight aviary and a chance to touch a stingray in the Florida Bay experience.
- 2 River of Grass**
Venture into an interactive virtual environment where animal characters come to life in a 20-minute journey through the Everglades. Then, experiment with the principles of hydrology on the outdoor water tables. *(For children 6 and under)*
- 3 Design Lab: Engineering**
Part exhibition, part laboratory, you'll encounter vintage iterations of everyday objects influenced by engineering while putting your critical thinking skills to the test in a lab setting.

LEVEL 3



- 1 Aquarium: The Dive**
Nearly 30 aquariums and interactive exhibits invite you to experience the extreme diversity of the subtropical sea, including damselfish, starfish and urchins.
- 2 Feathers to the Stars**
Follow the astounding story of flight—from feathered dinosaurs to the adventure of future space travel—while meeting the 30-foot *Yutyrannus huali* and launching air rockets.
- 3 MeLaß**
Explore the amazing ways your body and mind work together, and how your daily choices impact your health and wellbeing.

LEVEL 2



- 1 Aquarium: The Deep**
Inside the lowest level of our Aquarium, you'll discover the vast depths of the Gulf Stream, including the iconic 31-foot Oculus and fantastical jellies.
- 2 From the Curious Vault**
Take a look at over 36 display cases featuring some of the treasured specimens and objects that have been donated to the museum by members of the community.
- 3 MeLaß**
Explore the amazing ways your body and mind work together, and how your daily choices impact your health and wellbeing.

LEVEL 1



- 1 Frost Planetarium**
Go on a visual joyride through Earth and space powered by a 16-million-color 8K visual system with surround sound.
- 2 A Mirror Maze: Numbers in Nature**
Navigate through a giant mirror maze and discover the amazing numerical patterns that exist in the natural world. You'll never look at the world the same way again!
- 3 Building Science: Great Minds in Time**
Retrace the footsteps of innovators like Archimedes, Marcus Vitruvius and Leonardo da Vinci as you discover interactive hands-on exhibits that explore their engineering invention.