

# MAP & GUIDE

FROST  
SCIENCE

"Starry Night," Scanning electron microscope image, coloured © Max Planck Institute of Colloids and Interfaces, Potsdam / Yuan Jiang, Helmut Cölfen, Markus Antonietti, Katja Schulze

## BECOME A MEMBER TODAY!

Apply your admission tickets toward a membership and enjoy the museum for a full year. Visit the Member and Guest Relations desk today. Explore more at [frostsscience.org/membership](https://frostsscience.org/membership).

## HOURS

Open daily, 365 days a year, 9:30 a.m. – 6:00 p.m.

Onsite admission sales at the Ticket Center end at 5:00 p.m. Visit [frostsscience.org](https://frostsscience.org) regarding any changes in schedule or closure information. *Please note:* During holiday periods and summer months, the museum offers special extended hours on select days.

**Summer Science Weekends:** Frost Science will be open until 7:30 p.m. every Saturday and Sunday from June 8 through September 1.

For more information and to purchase tickets, please visit [frostsscience.org/playourday](https://frostsscience.org/playourday).

## COFFEE@SCIENCE

Open 9:00 a.m. – 6:00 p.m.

## FOOD@SCIENCE CAFÉ\*

Open M–F 11:00 a.m. – 4:00 p.m.  
Open Sat–Sun 11:00 a.m. – 5:00 p.m.  
\*Hours are subject to change

## SCIENCE STORE

Open 9:30 a.m. – 6:00 p.m.

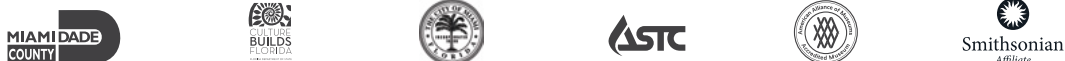
## GET CONNECTED

Follow us [@frostsscience](https://twitter.com/frostsscience) and tag us at [#FrostScience](https://twitter.com/FrostScience) and [#ItsScienceMiami](https://twitter.com/ItsScienceMiami).

## PHILLIP & PATRICIA FROST MUSEUM OF SCIENCE

1101 Biscayne Blvd, Miami, FL 33132 | 305-434-9600

[Instagram](https://www.instagram.com/frostsscience) [Facebook](https://www.facebook.com/frostsscience) [LinkedIn](https://www.linkedin.com/company/frosts-science) @FROSTSCIENCE



The Phillip and Patricia Frost Museum of Science is supported by the Miami-Dade County Department of Cultural Affairs and the Cultural Affairs Council, the Miami-Dade County Mayor and Board of County Commissioners of Miami-Dade County. This project is supported by the Building Better Communities Bond Program and the City of Miami. Sponsored in part by the State of Florida, Department of State, Division of Cultural Affairs, and the Florida Council on Arts and Culture. The museum is accredited by the American Alliance of Museums, is an affiliate of the Smithsonian Institution and a member of the Association of Science and Technology Centers. Frost Science is an accessible facility. All contents ©Phillip and Patricia Frost Museum of Science. All rights reserved.

## Experience more with the Frost Science Mobile App!

### HOW TO DOWNLOAD:



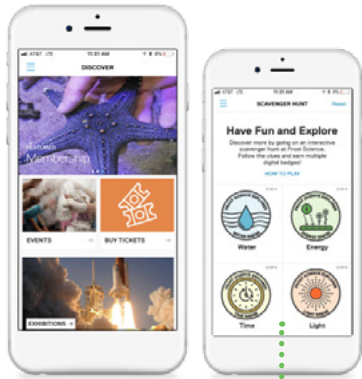
- 1 Download the Frost Science mobile app for Apple and Android smartphones via the App Store or Google Play.
- 2 Turn on Bluetooth.
- 3 In your device settings, connect to the **free** "Frost Science Guest" WiFi network.
- 4 Accept the terms of service to connect.

### ENHANCED EXPERIENCE

Make the most of your visit with specially curated content, including fascinating science stories, research, videos and photos.

### AUDIO DESCRIPTION TOURS

Get audio descriptions of selected tactile exhibits in the Aquarium and museum exhibitions.



### SCAVENGER HUNT!

Discover more by going on an interactive scavenger hunt around the museum! Follow the clues and earn multiple digital badges. Collect them all and visit the Science Store to claim a special prize.

## Behind the Build

### SELF-GUIDED TOUR

The Frost Science campus is an exhibition in and of itself! **Look for this green icon around the museum** to learn more about our design concept and architecture, environmentally friendly best practices and behind-the-scenes information on our technology infrastructure.



## Daily Schedule

Watch science come to life through live demonstrations and presentations around the museum. Get hands-on with various science topics during these special guest experiences:



### DIVE BAR

*Located in the Aquarium: The Dive - Level 3*  
Dive deeper into marine science with hands-on activities that investigate the animals, plants and environments which marine and coastal life call home.  
**11:00 a.m. / 1:00 p.m. / 4:00 p.m. Extended Hours: 6:30 p.m.**



### MICROBES AND YOU

*Located in The Secret World Inside You Exhibition - Level 1*  
Uncover the world of microbes found on and in you from cheeks to belly buttons through an interactive show. **11:00 a.m. / 12:30 p.m. / 2:00 p.m. / 3:30 p.m. Extended Hours: 5:00 p.m.**



### SNACK-SIZE SCIENCE

*Located in the MeLaß - Level 1*  
Discover the amazing ways the human mind and body work together by taking a bite out of topics like neurobiology, chemistry and food science. **11:15 a.m. / 1:15 p.m. / 3:15 p.m.**



### SPARK OF SCIENCE

*Located on the Level 3 Outdoor Terrace*  
Experience engaging presentations and hands-on demos that explore exciting science topics. **11:30 a.m. / 1:30 p.m. / 3:30 p.m.**



### LET'S DANCE

*Located in the MeLaß - Level 1*  
Rock your body during a friendly dance competition that explores how energy works within the human body. **11:45 a.m. / 12:45 p.m. / 2:45 p.m.**



### WHAT'S THE MATTER?

*Located in the Strange Matter Exhibition - Level 3*  
Do you have what it takes to be a materials scientist? Explore the hidden secrets in everyday matter. **12:15 p.m. / 3:15 p.m. Extended Hours: 5:45 p.m.**



### ANIMAL ENCOUNTERS

*Located in the Aquarium, various locations*  
Come face-to-face with some of the animals that call Frost Science home, including some of our rehabilitated reptiles and feathered friends. **Times Vary**



### INSIDER'S TOUR\*

*Meet on Level 5 outside of the Elevator Vestibule*  
Enhance your visit with a guided Insider's Tour of Frost Science, including special access to an animal feeding and encounter. Must purchase tickets by 2:00 p.m. at the onsite Ticket Center. **2:15 p.m. (Saturdays and Sundays Only)**  
\*Separate ticket required.



### FOOD@SCIENCE

Fuel up with a variety of salads, burgers and pizzas in a casual indoor and outdoor setting overlooking Museum Park.



### COFFEE@SCIENCE

Stop by for Starbucks beverages, pastries and empanadas.



### SCIENCE STORE

Discover a wide range of science tools and toys, t-shirts, books and unique exhibition-related gifts.

Located on  
Level 1

## Max Planck Images of Science

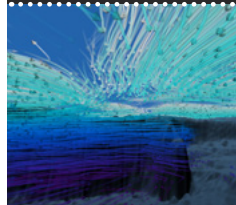
Don't miss this special photo exhibit featuring a collection of 30 striking images captured during the course of scientific research from some of the Max Planck Society's work around the world, presented by the Max Planck Florida Institute for Neuroscience. On view in the museum's Feathers to the Stars exhibition.

Located on  
Level 3

## Frost Planetarium

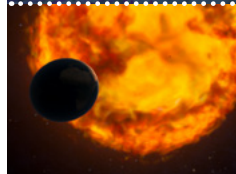
Show Descriptions

Showtimes



### DYNAMIC EARTH

Narrated by Liam Neeson, you'll ride along on swirling ocean currents, fly into rolling volcanoes and dive into the heart of a hurricane as you explore the inner workings of the Earth's climate system.



### JOURNEY TO THE STARS

Journey through space and time to experience the life and death of the stars in our night sky, including our own nurturing Sun, in this dazzling space show narrated by Whoopi Goldberg.



### ASTEROID: MISSION EXTREME

Discover what it would take for astronauts to reach an asteroid while exploring the dangers—and opportunities—they pose to humankind during this adventure narrated by Sigourney Weaver.

10:00 a.m.  
11:20 a.m.  
12:40 p.m.  
2:40 p.m.  
5:20 p.m.

10:40 a.m.  
12:00 p.m.  
2:00 p.m.  
4:00 p.m.

1:20 p.m.  
3:20 p.m.  
4:40 p.m.

## Your Support Matters

The Phillip and Patricia Frost Museum of Science, a 501(c)(3) non-profit organization, inspires people to enjoy science and understand its power to positively impact our world. We are a champion for science learning and research, environmental conservation, animal care and rehabilitation.

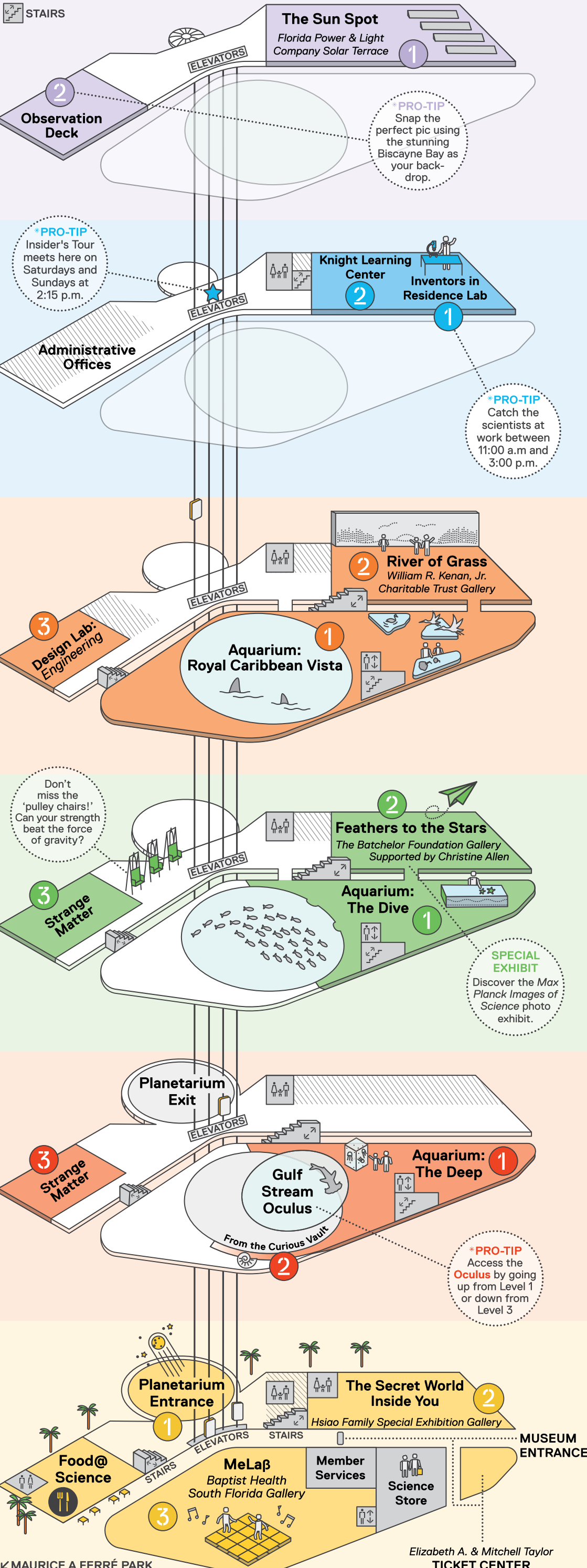
Consider a mission-fulfilling gift today at [frostsscience.org/donate](https://frostsscience.org/donate).



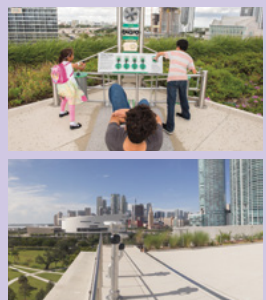


Frost Science is a smoke-free facility. No smoking or vaping on property.

- RESTROOMS
- ELEVATORS
- STAIRS



LEVEL 6 (ROOF)



- 1 The Sun Spot**  
Experience the power of the sun as a renewable source of energy through several interactive solar-powered activities.
- 2 Observation Deck**  
Take in spectacular views of Downtown Miami and the sparkling waters of Biscayne Bay using our viewfinders before snapping the ultimate rooftop photo.

LEVEL 5



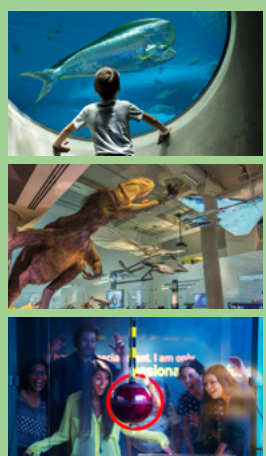
- 1 Inventors in Residence Lab**  
Get a behind-the-scenes look at how science takes on the challenges of the 21st century while meeting the scientists working on solutions for the future.
- 2 Knight Learning Center**  
The Knight Learning Center is comprised of three classrooms that host Frost Science camps, various learning opportunities, and can be utilized as an event space.

LEVEL 4



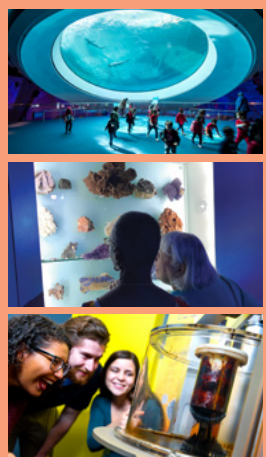
- 1 Aquarium: Royal Caribbean Vista**  
The top deck of the Aquarium puts you at the surface of key South Florida ecosystems as you explore the mangrove forests and corals. Don't miss the free-flight aviary and a chance to touch a stingray in the Florida Bay experience.
- 2 River of Grass**  
Venture into an interactive virtual environment where animal characters come to life in a 20-minute journey through the Everglades. Then, experiment with the principles of hydrology on the outdoor water tables. *(For children 6 and under)*
- 3 Design Lab: Engineering**  
Part exhibition, part laboratory, you'll encounter vintage iterations of everyday objects influenced by engineering while putting your critical thinking skills to the test in a lab setting.

LEVEL 3



- 1 Aquarium: The Dive**  
Nearly 30 aquariums and interactive exhibits invite you to experience the extreme diversity of the subtropical sea, including damselfish, starfish and urchins.
- 2 Feathers to the Stars**  
Follow the astounding story of flight—from feathered dinosaurs to the adventure of future space travel—while meeting the 30-foot *Yutyrannus huali* and launching air rockets.
- 3 Strange Matter**  
Uncover the surprising science behind everyday stuff and get a glimpse of where materials science might take us.

LEVEL 2



- 1 Aquarium: The Deep**  
Inside the lowest level of our Aquarium, you'll discover the vast depths of the Gulf Stream, including the iconic 31-foot Oculus and fantastical jellies.
- 2 From the Curious Vault**  
Take a look at over 36 display cases featuring some of the treasured specimens and objects that have been donated to the museum by members of the community.
- 3 Strange Matter**  
Uncover the surprising science behind everyday stuff and get a glimpse of where materials science might take us.

LEVEL 1



- 1 Frost Planetarium**  
Go on a visual joyride through Earth and space powered by a 16-million-color 8K visual system with surround sound.
- 2 The Secret World Inside You**  
Discover the human microbiome—the vast community of bacteria, viruses and other microbes that call our bodies home.
- 3 MeLaB**  
Challenge your brain with puzzles and experiments, stop a virus, dance or just chill out as you explore the amazing ways your body and mind work together.